

FOR SALE- LAND WITH OFFICE/WAREHOUSE

\$750,000

± 43.62 AC

1991 & 1999 Alton Road | Birmingham, AL 35210

5171 Amber Hills Road | Birmingham, AL 35210

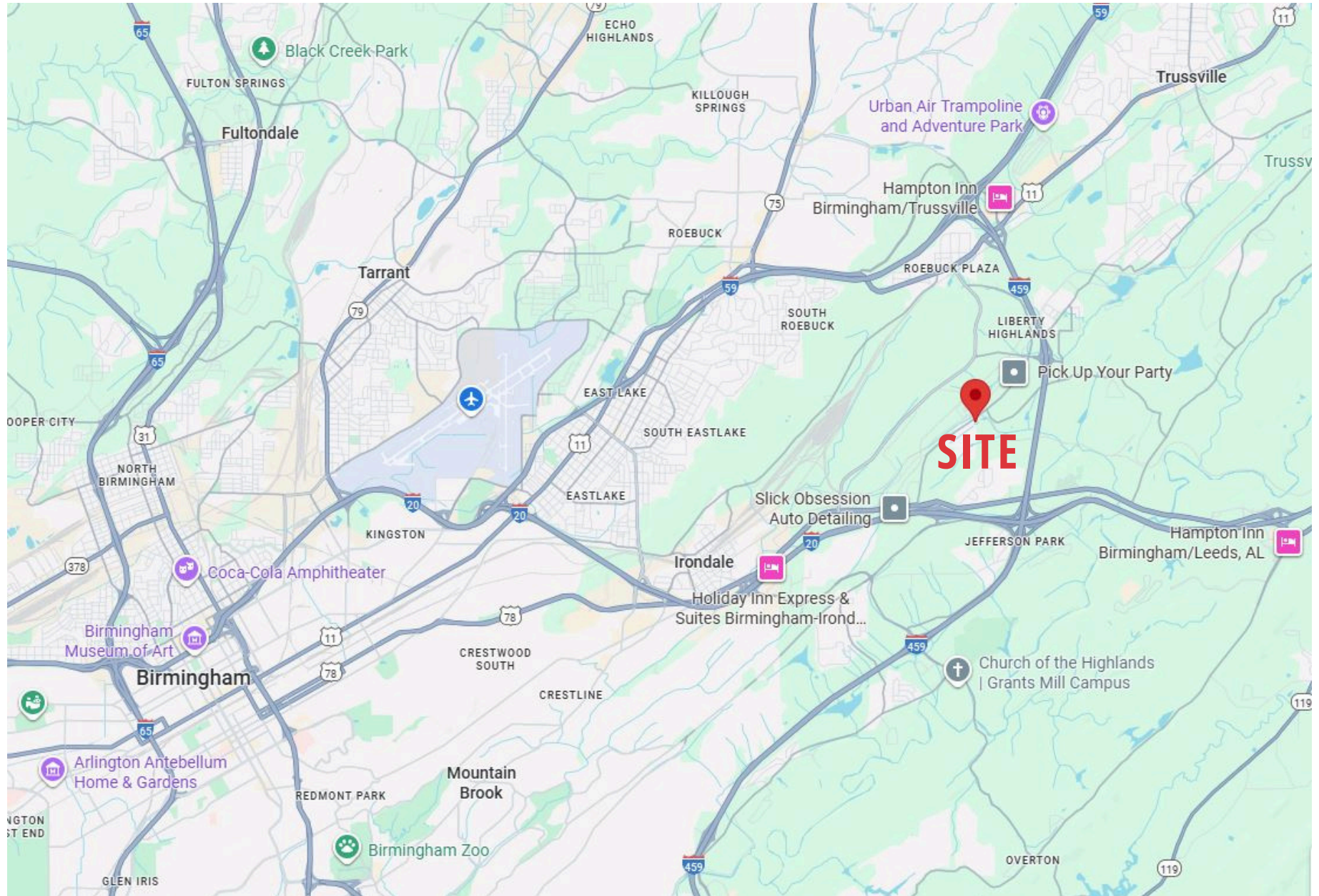


Property Highlights

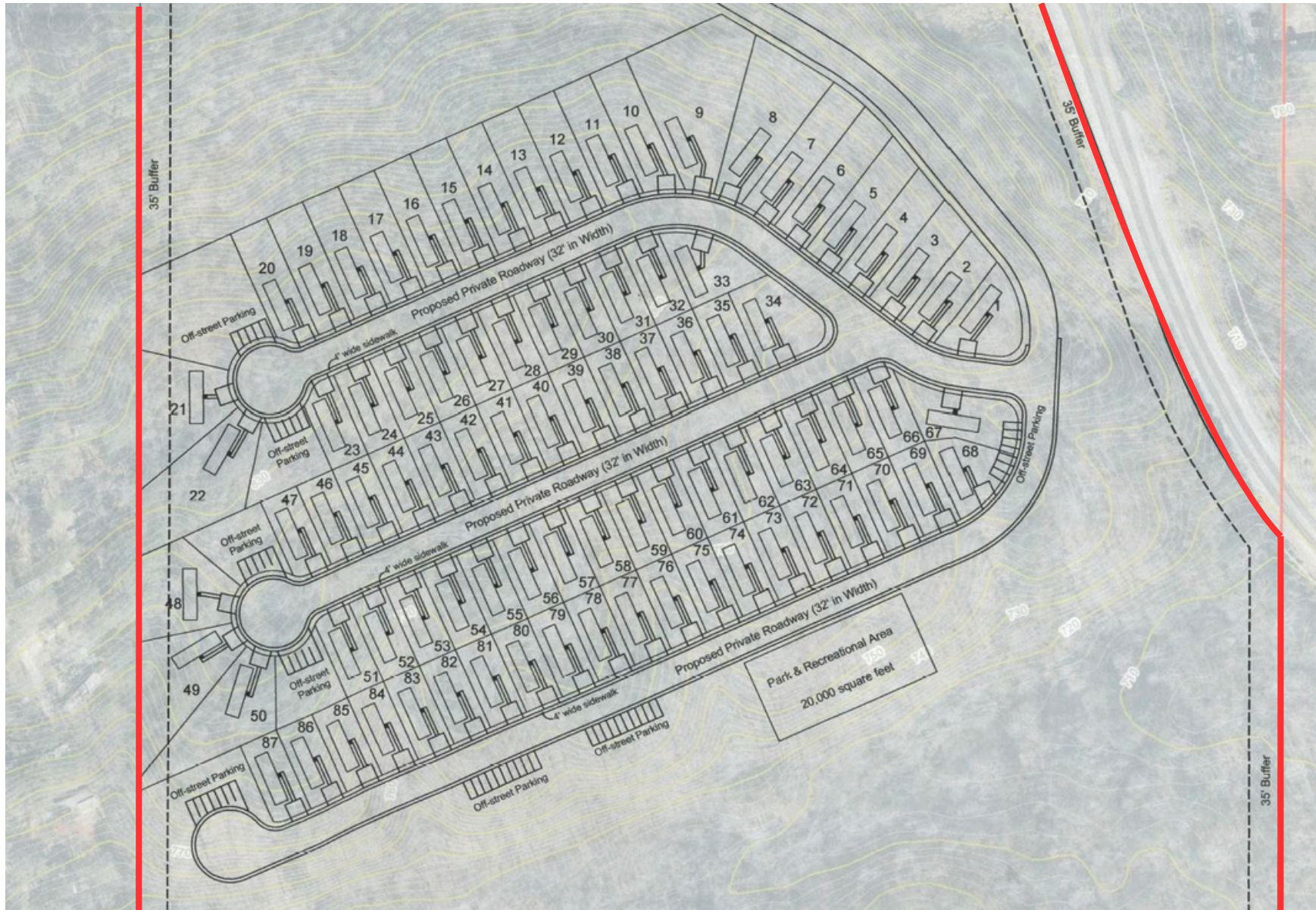
- LAH Commercial Real Estate is pleased to present this 43.62± AC listing with buildings located directly on Alton Rd in the City of Irondale.
- This property formerly operated as a tree service, but is primarily zoned R-5-B, a unique and hard, if not impossible, to find zoning allowing Mobile Home Park use. The property has potential to be rezoned for Industrial, Single Family, or Multifamily uses.
- Zoning:
 - 1991 Alton Road including the buildings and 0.35± AC: I-1 Light Industrial
 - The balance of 43± AC zoned R-5-B Mobile Home Park Zone
- Property includes 6,920± square feet of building area settled directly on Alton Rd, consisting of 1,920± square feet of office space and 5,000± square feet of shop/warehouse space.
- Approximately 17 AC are cleared and partially graded on the central portion of the property, with an additional 2± AC graded adjacent to the office.
- Sewer available.
- This property is only 1 mile from I-459 and 1.8 miles from I-20.
- Call Broker for more details regarding the property.



Location Map



Conceptual Site Plan for 87 Unit Mobile Home Park



Office & Shop/Warehouse



ALEX KYRIAZIS
alexk@lahcommercial.com | (251) 591-9390

LAH COMMERCIAL
REAL ESTATE

2850 Cahaba Road, Suite 200 • Birmingham, AL 35223 • 205-870-8580 (o) • lahcommercial.com

Information deemed reliable but not guaranteed

Office Interior



Alex Kyriazis | alexk@lahcommercial.com | (251) 591-9390

LAH COMMERCIAL
REAL ESTATE

Information deemed reliable but not guaranteed