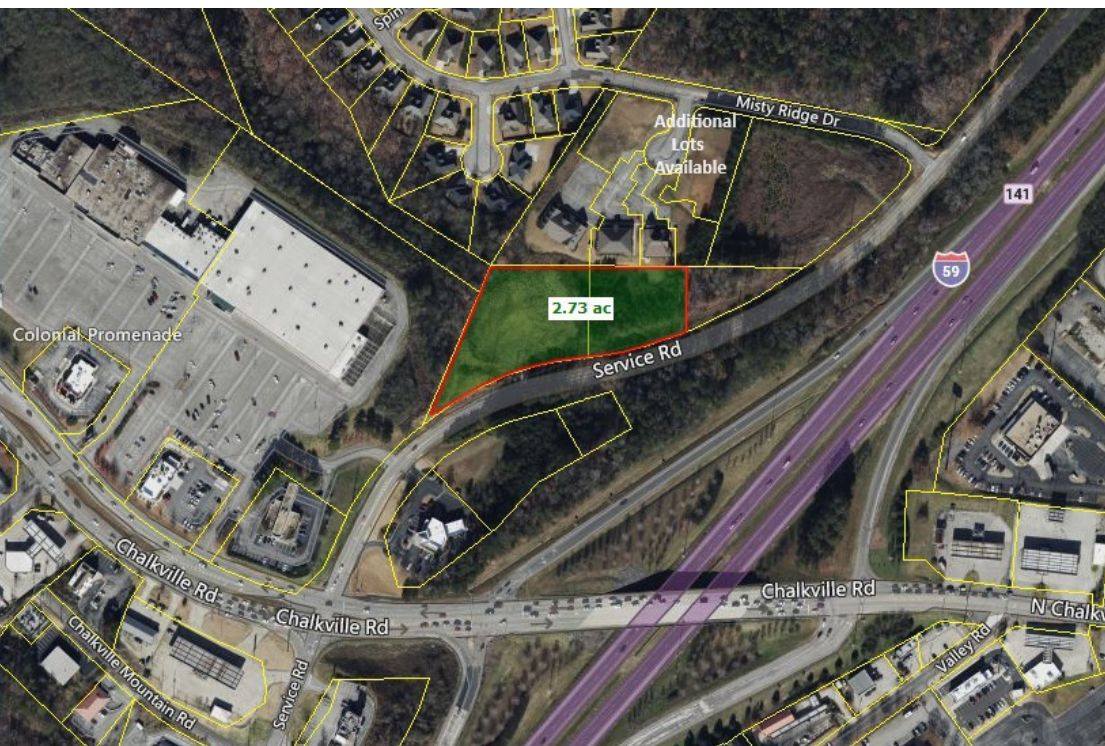


LAND FOR SALE

6006 Service Road | Trussville, AL 35235



Multiple Options

- Lot 7A + 7B = 2.73 +/- acres
- \$695,000
- Pad ready commercial lot
- Convenient to I-59 with visibility
- I-59 to expand to 6 lanes
- Exceptional value
- Zoning C-2 General Business District; Perfect for a number of uses
- Adjacent to established professional offices
- Trussville City Limits
- Motivated Sellers; Sellers will consider favorable owner financing options
- Utilities Available on Site
- Largest parcel in this Commercial Subdivision still available
- Additional smaller lots available in this commercial subdivision
- Please call or email Brokers for more details



ROY HOCKMAN

roy@lahcommercial.com | (205) 870-8580

ALEX KYRIAZIS

alexk@lahcommercial.com | (251) 591-9390