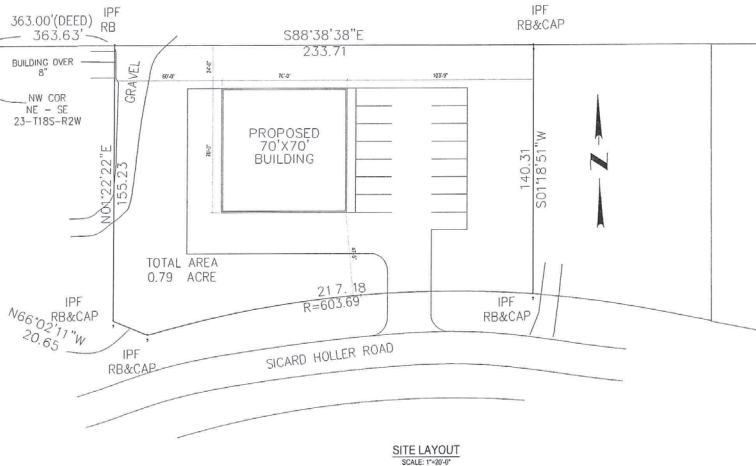


# BUILD TO SUIT

4122 SICARD HOLLOW ROAD | BIRMINGHAM, AL 35242

PRICE  
NEGOTIABLE

.79 +/- Acres



- Build up to 5,000 Sq/ft
- Zoned C-1, Jefferson County
- Septic System
- Easy Access to HWY 280 and Cahaba Heights

**KEITH ARENDALL**

karendall@lahcommercial.com | (205) 870-8580

**LAH** COMMERCIAL  
REAL ESTATE

2850 Cahaba Road, Suite 200 • Birmingham, AL 35223 • 205-870-8580 (o) • lahcommercial.com

Information deemed reliable but not guaranteed