

COMMERCIAL LOT FOR SALE OR LEASE

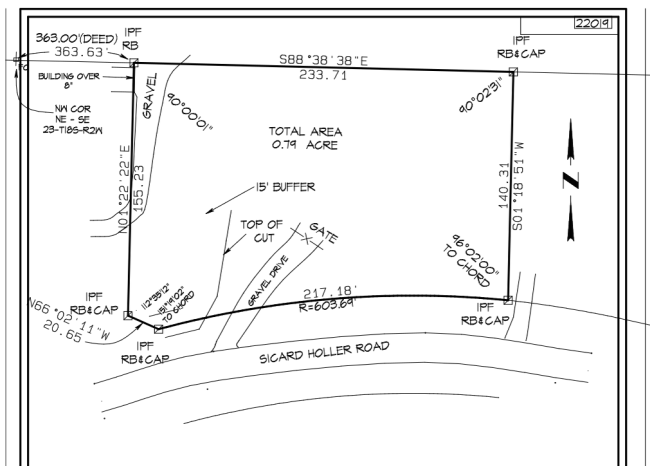
4122 SICARD HOLLOW ROAD

BIRMINGHAM, AL 35242

\$225,000

\$1,500 per Month

.79 +/- Acre



- Partially Graded
- Quick and easy access to HWY 280 and I-459
- Zoned C-1 Jefferson County (Allows Mini Warehouses)
- Monthly Rent \$1,500

KEITH ARENDALL

karendall@lahcommercial.com | (205) 870-8580

LAH COMMERCIAL
REAL ESTATE

2850 Cahaba Road, Suite 200 · Birmingham, AL 35223 · 205-870-8580 (o) · lahcommercial.com

Information deemed reliable but not guaranteed