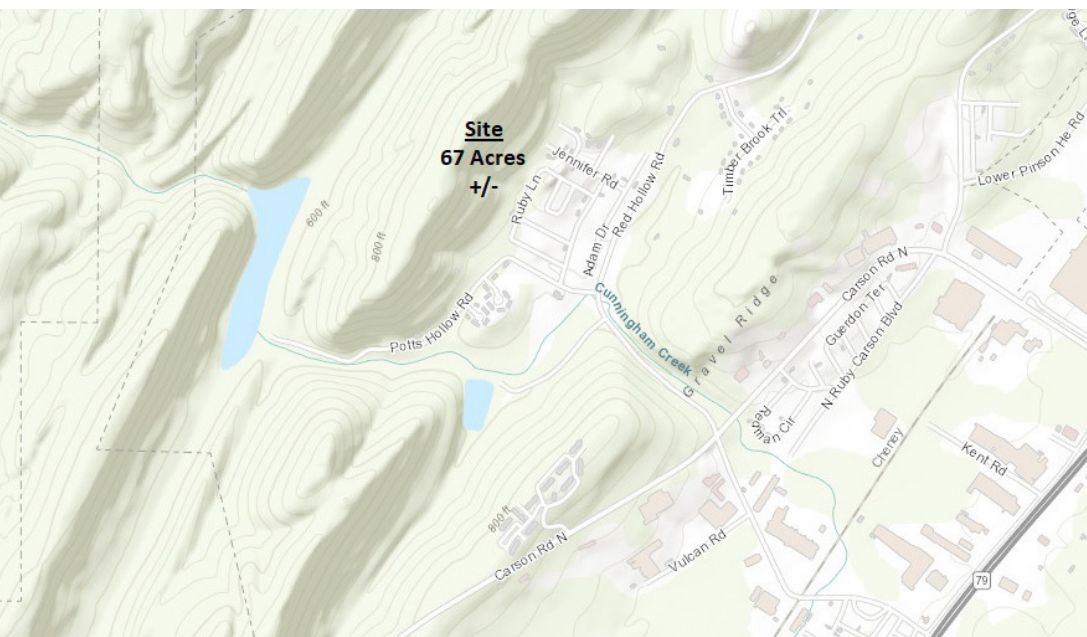
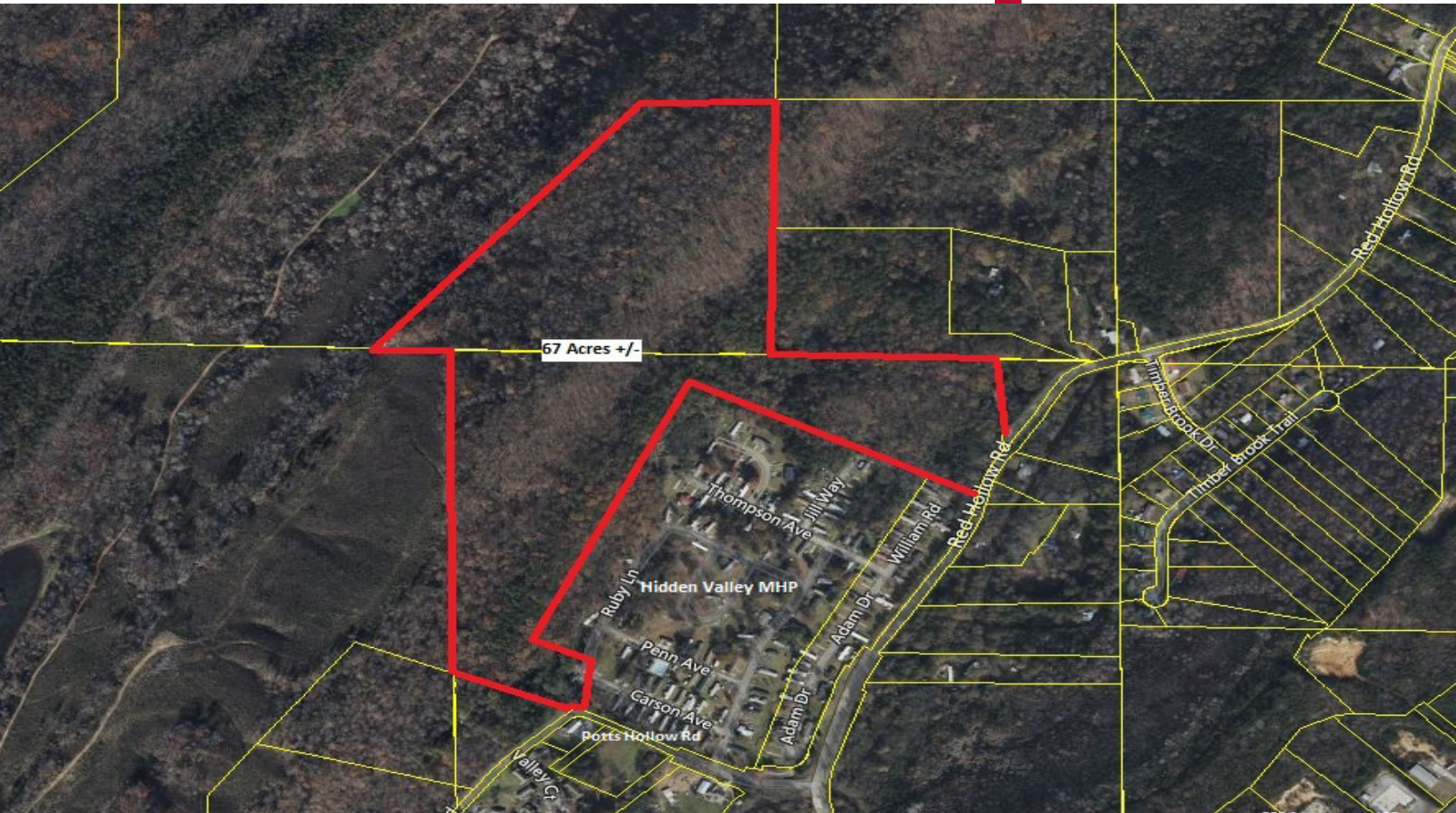


LAND FOR SALE

5325 Red Hollow Road | Birmingham, AL 35215

\$190,000

67 ACRES +/-



- Heavily timbered acreage approximately 10 miles northeast of Downtown Birmingham
- Unincorporated Jefferson County, between Fultondale and Center Point
- Access from Red Hollow Road and Potts Hollow Road just 1 mile off Pinson Valley Pkwy
- Ridge across property may provide views
- Potential investment, recreational, or developmental tract

AUSTIN BLAIR

ablair@lahcommercial.com | (205) 478 - 7805

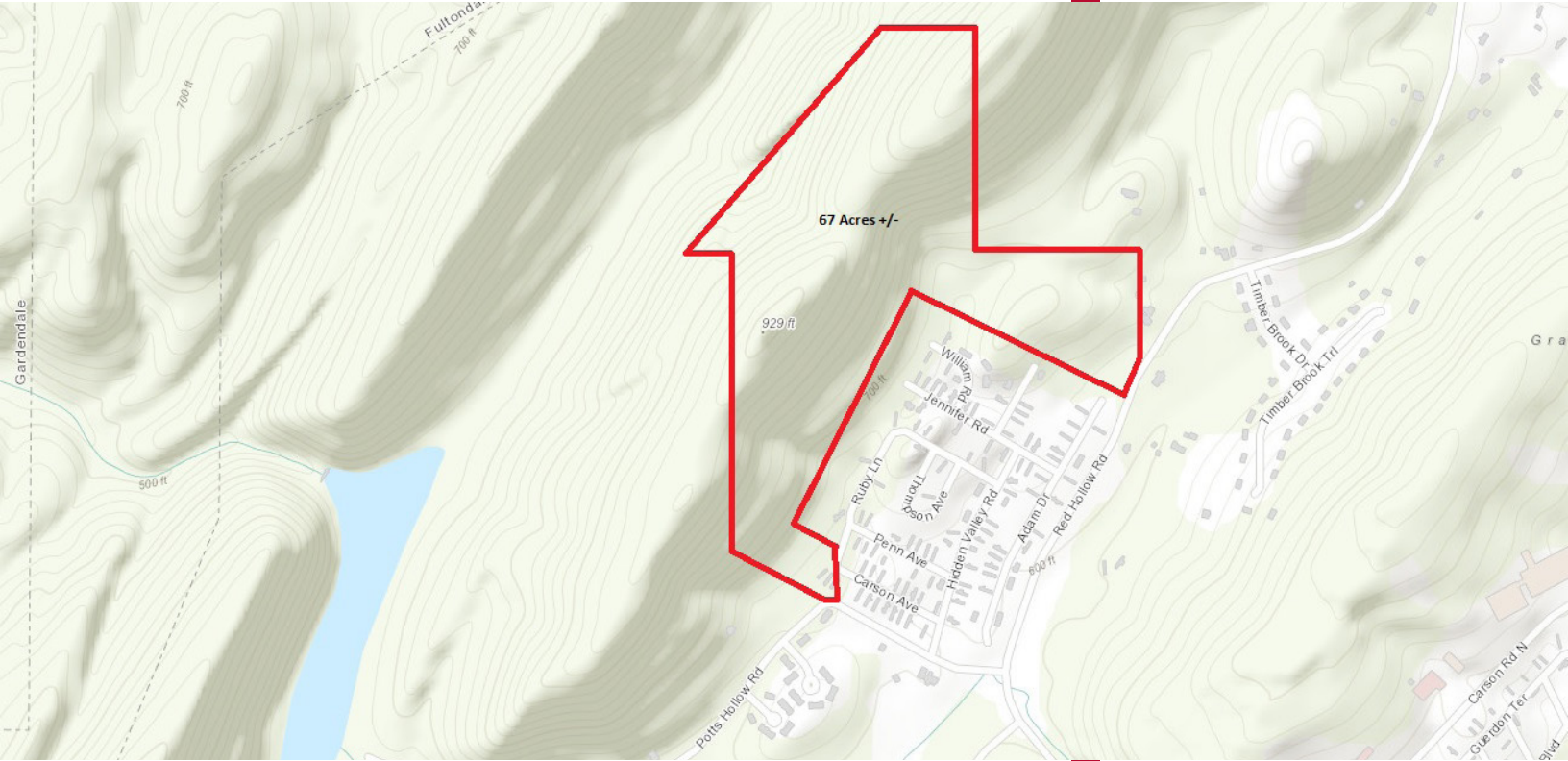
2850 Cahaba Road, Suite 200 · Birmingham, AL 35223 · 205-870-8580 (o) · lahcommercial.com

LAH COMMERCIAL REAL ESTATE

ADDITIONAL IMAGES

\$190,000

67 ACRES +/-



AUSTIN BLAIR

ablair@lahcommercial.com | (205) 478 - 7805

LAH COMMERCIAL
REAL ESTATE

2850 Cahaba Road, Suite 200 · Birmingham, AL 35223 · 205-870-8580 (o) · lahcommercial.com

Information deemed reliable but not guaranteed