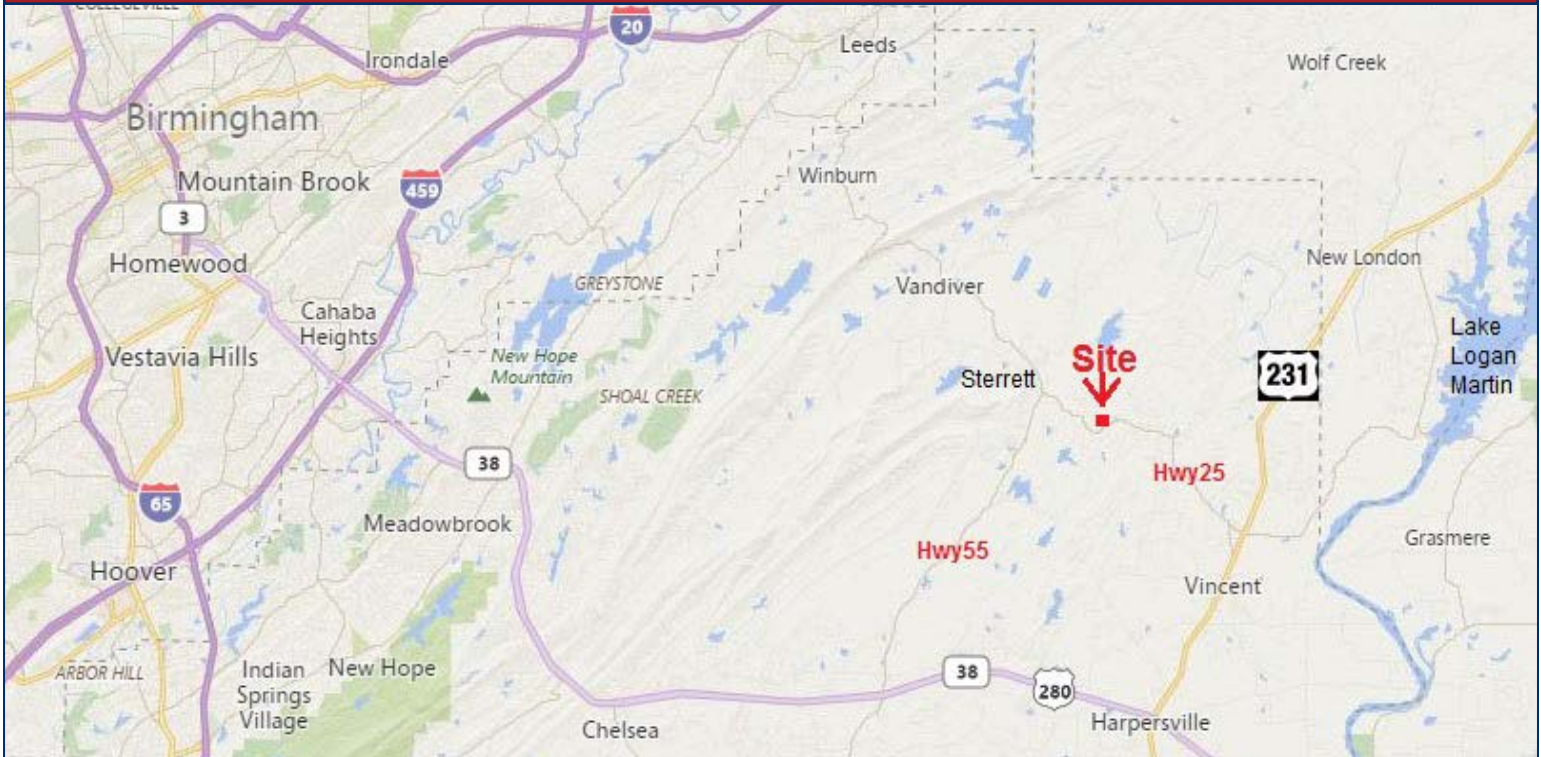


Acreage For Sale



Address: 47586 Highway 25
Sterrett, Alabama 35147

- 84 +/- AC undeveloped land
- Located in Unincorporated Shelby County
- Completely wooded with mix of mature hardwoods and pines
- Basic road/trail system throughout property
- Frontage and access off Highway 25
- Adjoins small lake with views
- Approx. 26 miles from the Summit Shopping Center
- Scenic creek winds through western portion
- Very private setting



Sale Price: ~~\$399,000~~
\$323,000

Information deemed reliable, but subject to verification

LAH COMMERCIAL
REAL ESTATE

Austin Blair
205-478-7805
ablair@lahcommercial.com

2850 Cahaba Road, Suite 200
Birmingham, AL 35223
Office: 205-870-8580
Fax: 205-870-7348



Distant View Through Woods



View of Creek



View of Neighbor's Lake From Property



Road View



Small Clearing



Hardwoods & Pines

LAH COMMERCIAL
REAL ESTATE

Austin Blair
205-478-7805
ablair@lahcommercial.com

2850 Cahaba Road, Suite 200
Birmingham, AL 35223
Office: 205-870-8580
Fax: 205-870-7348



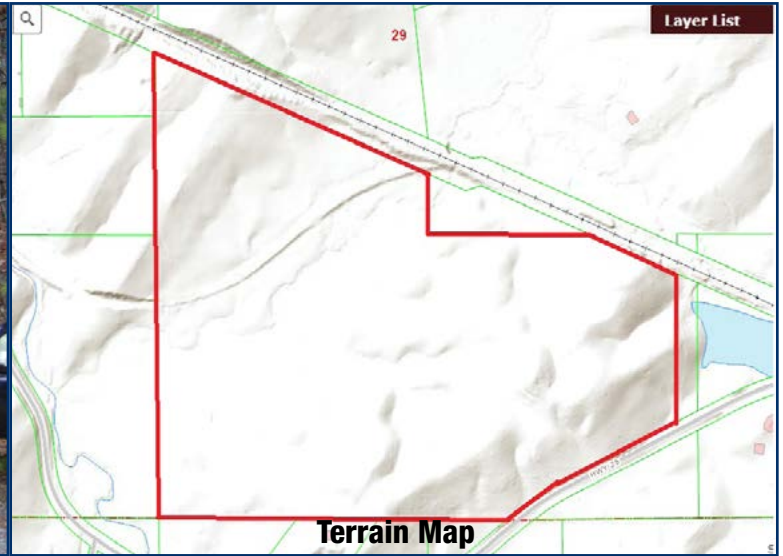
Property View From Highway 25



Hardwoods



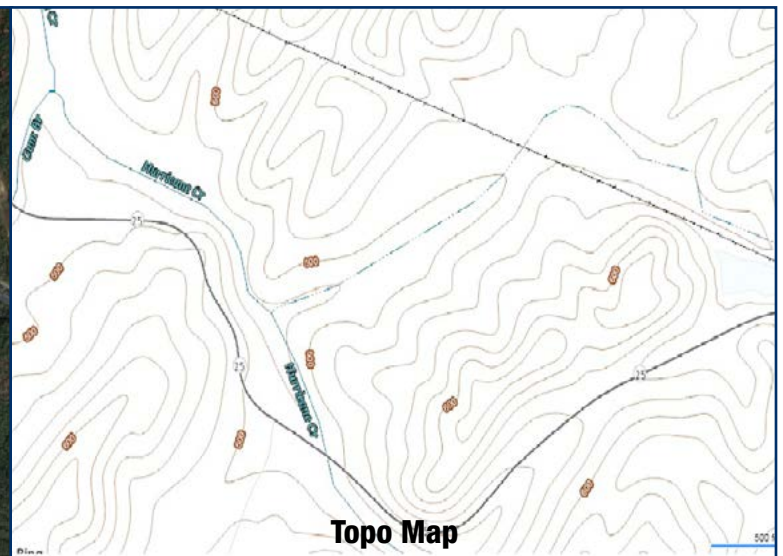
Entrance Road View



Terrain Map



Aerial Map - Summer View



Topo Map

LAH COMMERCIAL
REAL ESTATE

Austin Blair
205-478-7805
ablair@lahcommercial.com

2850 Cahaba Road, Suite 200
Birmingham, AL 35223
Office: 205-870-8580
Fax: 205-870-7348