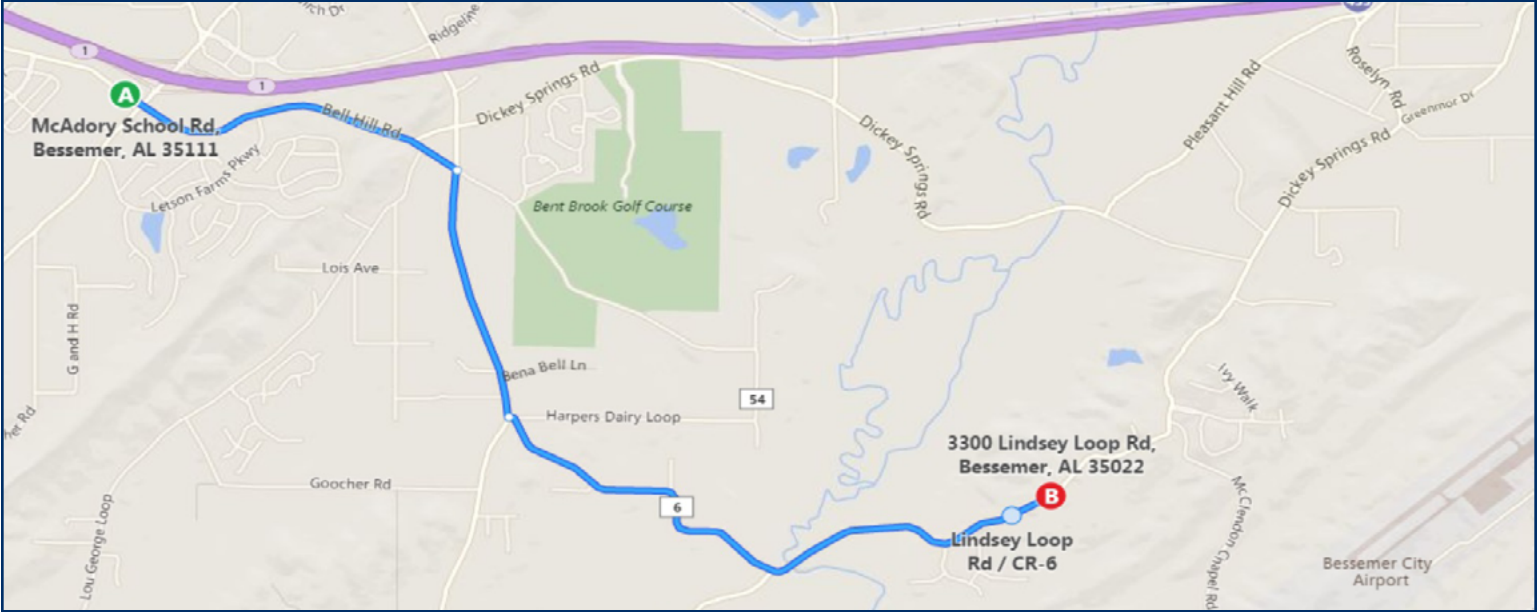


For Sale

196 +/- Acres in Jefferson County

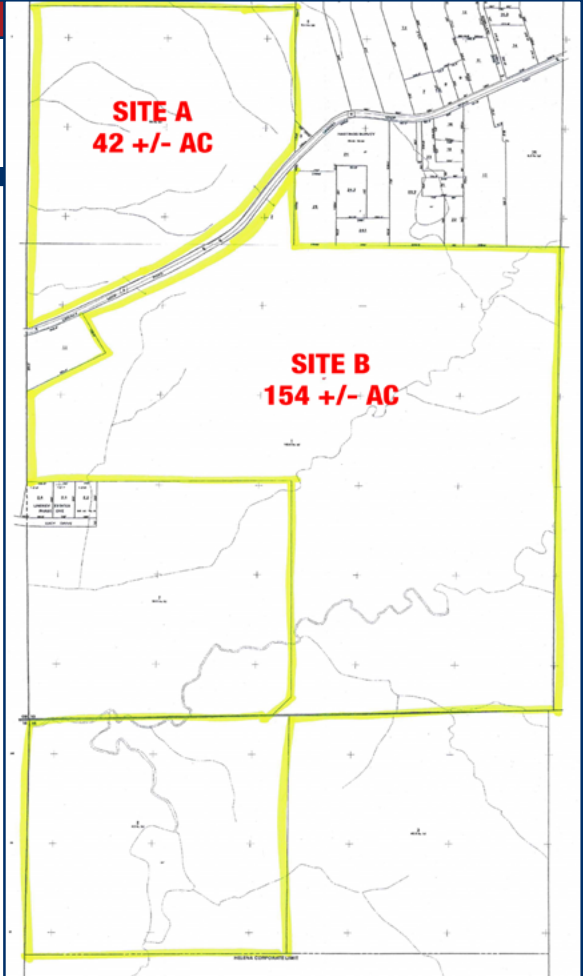


Address: Lindsey Loop Road
Jefferson County, AL

- Site A: 42 +/- AC
- Site B: 154 +/- AC
- Easy access to Morgan Road/I-459 Exit and Eastern Valley Road/I-459 Exit
- Nice terrain
- All utilities except sewer available
- Zoned A-1, Jefferson County
- Ideal for single family, subdivision, mini-farms or corporate retreat
- Zoned for McAdory Schools

Site A: \$315,000 or \$7,500/AC
Site B: \$770,000 or \$5,000/AC
Total Acreage: \$1,085,000

Information deemed reliable, but subject to verification



Keith Arendall
205.910.8096

karendall@lahcommercial.com

LAH COMMERCIAL
REAL ESTATE

2850 Cahaba Road, Suite 200
Birmingham, AL 35223
Office: 205-870-8580